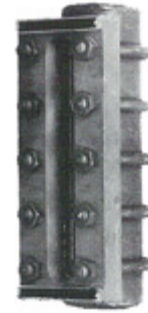
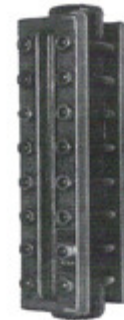


Series Q10 Large Chamber Liquid Level Gauges

Large Chamber Gauges are specifically designed for liquids which have the tendency to surge or boil. These gauges reduce the boiling effects of entrained gas. They help to reduce liquids being vaporized under critical low pressure and help to reduce boiling the liquids when temperature exceeds the boiling point. Series Q10 Gauges are available in both reflex and transparent applications. These gauges are designed with heavy wall steel tubing as a chamber, complete with sectional covers and gauge glasses. The final assembly of these gauges are specially processed, heat treated and tempered. Standard connections for these gauges are 3/4 inch NPT female end connections. Additionally, 1/2 inch or 3/4 inch NPT side connections are available. Also 2 inch flanged or scarfed for welding connections which provide unrestricted flow through the chamber, may be specified. All carbon steel parts are rust proofed.



**QRL-10
(REFLEX)**

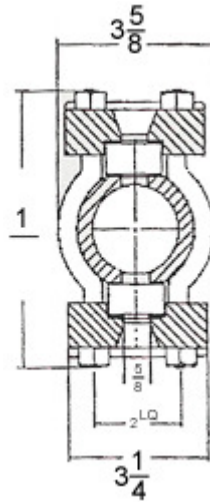
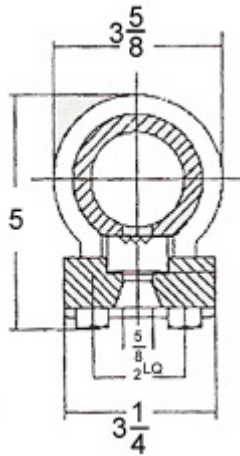


**QTL-10
(TRANSPARENT)**

PRESSURE / TEMPERATURE RATINGS (Flanged gauges take flanged rating when lower)

	TRANSPARENT GLASS SIZE									REFLEX GAUGE GLASS SIZE									
	1	2	3	4	5	6	7	8	9	1	2	3	4	5	6	7	8	9	
Test Pressure Deg. °F	1800	1665	1530	1395	1275	1140	1020	885	750	3600	3375	3150	2910	2700	2460	2250	2010	1800	
100	1200	1110	1020	930	850	760	680	590	500	100	2400	2250	2100	1940	1800	1640	1500	1340	1200
200	1080	1000	920	840	760	680	600	530	450	200	2220	2090	1950	1810	1670	1540	1400	1260	1130
300	960	890	830	750	680	620	540	470	400	300	2050	1920	1800	1680	1540	1430	1300	1180	1060
400	850	790	720	670	600	540	480	420	360	400	1860	1750	1640	1530	1420	1320	1200	1100	1000
500	730	680	630	570	520	470	420	360	310	500	1690	1600	1500	1400	1300	1210	1110	1010	920
600	620	570	530	480	440	400	360	310	270	600	1520	1430	1350	1260	1180	1100	1010	920	850
750	440	410	380	350	320	280	260	230	200	700	1250	1190	1120	1060	1000	940	870	810	760

% of Rating	100%	90%	50%	TEST PRESSURE: All gauges are Hydrostatically tested by Quality Prior to shipment @ 1-1/2 times. The design pressure rating at 100°F
CHAMBER MATERIAL	CARBON STEEL, STAINLESS STEELSERIES 300 OR 300L	MONEL	BRASS	
GASKETING	BONDED COMPRESSED FIBERS OR TEFLON GLASS FILLED		PURE TEFLON NEOFLON CTFE (SHIELDS)	



Series Q10 Gauge Specifications

Lengths

Series Q10 gauges are available in nine standard visible glass lengths. Multiples of the same size windows (up to nine sections) in a single piece bar stock liquid chamber are used for longer lengths.

Connections

Standard Series Q10 Gauges are furnished with 1/2 or 3/4 inch NPT female end connections. Other connections available: 1/2 or 3/4 inch NPT female or male, side or back, flanged ends, side or back to suit mating connections.

Liquid Chambers

Machined from bar stock with recessed gasket seats.

Covers

All covers are manufactured to be interchangeable.

Bolt & Nuts

Alloy steel to ASTM Standards.

Glass

The tempered glass must be protected from corrosive substances such as caustic acid and hydrofluoric acid. Only transparent glass with mica or Kel-f shields must be used in these applications.

Gaskets

Precision die cut from the highest quality materials.

Protection

All carbon steel parts are coated both externally and internally with a high quality rust inhibitor. This coating serves as a superior bonding base for paint. It is recommended that all Q10 Gauges be installed with Quality Gauge Valves, having safety ball checks, which help provide protection against physical injury and loss of product should glass breakage occur.

Single Selection Reflex Gauges					
Model No.	Visible Glass Inch	Overall Length Inch	Minimum Centres Side Connections 1/2 inch 3/4 inch		Approx Weight Lb.
Q11-RL-10	3 3/4	5 1/4	6 1/4	5 5/8	10
Q12-RL-10	4 3/4	6 1/4	7 1/4	6 5/8	11
Q13-RL-10	5 3/4	7 1/4	8 1/4	7 5/8	13
Q14-RL-10	6 3/4	8 1/4	9 1/4	8 5/8	14
Q15-RL-10	7 7/8	9 3/8	10 3/4	9 3/4	17
Q16-RL-10	9 1/8	10 5/8	11 5/8	11	19
Q17-RL-10	10 1/4	11 3/4	12 3/4	12 1/8	22
Q18-RL-10	11 7/8	13 3/8	14 3/8	13 3/4	24
Q19-RL-10	12 5/8	14 1/8	15 1/8	14 1/2	25

Single Selection Transparent Gauges					
Model No.	Visible Glass Inch	Overall Length Inch	Minimum Centres Side Connections 1/2 inch 3/4 inch		Approx Weight Lb.
Q11-TL-10	3 3/4	5 1/4	6 1/4	5 5/8	14
Q12-TL-10	4 3/4	6 1/4	7 1/4	6 5/8	17
Q13-TL-10	5 3/4	7 1/4	8 1/4	7 5/8	20
Q14-TL-10	6 3/4	8 1/4	9 1/4	8 5/8	23
Q15-TL-10	7 7/8	9 3/8	10 3/4	9 3/4	25
Q16-TL-10	9 1/8	10 5/8	11 5/8	11	29
Q17-TL-10	10 1/4	11 3/4	12 3/4	12 1/8	32
Q18-TL-10	11 7/8	13 3/8	14 3/8	13 3/4	36
Q19-TL-10	12 5/8	14 1/8	15 1/8	14 1/2	38

Two Section Reflex Gauges					
Model No.	Visible Glass Inch	Overall Length Inch	Minimum Centres Side Connections 1/2 inch 3/4 inch		Approx Weight Lb.
Q23-RL-10	13	15 1/2	14 1/2	14 7/8	26
Q24-RL-10	15	17 1/2	16 1/2	16 7/8	30
Q25-RL-10	17 1/4	19 3/4	18 3/4	19 1/8	34
Q26-RL-10	19 3/4	22 1/4	21 1/4	21 5/8	38
Q27-RL-10	22	24 1/2	23 1/2	23 7/8	42
Q28-RL-10	25 1/4	27 3/4	26 3/4	27 1/8	48
Q29-RL-10	26 3/4	29 1/4	28 1/4	28 5/8	52

Two Section Transparent Gauges					
Model No.	Visible Glass Inch	Overall Length Inch	Minimum Centres Side Connections 1/2 inch 3/4 inch		Approx Weight Lb.
Q23-TL-10	13	15 1/2	14 1/2	14 7/8	40
Q24-TL-10	15	17 1/2	16 1/2	16 7/8	46
Q25-TL-10	17 1/4	19 3/4	18 3/4	19 1/8	52
Q26-TL-10	19 3/4	22 1/4	21 1/4	21 5/8	59
Q27-TL-10	22	24 1/2	23 1/2	23 7/8	65
Q28-TL-10	25 1/4	27 3/4	26 3/4	27 1/8	73
Q29-TL-10	26 3/4	29 1/4	28 1/4	28 5/8	77

Three Section Reflex Gauges					
Model No.	Visible Glass Inch	Overall Length Inch	Minimum Centres Side Connections 1/2 inch 3/4 inch		Approx Weight Lb.
Q36-RL-10	30 3/8	32 7/8	31 7/8	32 1/4	58
Q37-RL-10	33 3/4	36 1/4	35 1/4	35 5/8	64
Q38-RL-10	38 5/8	41 1/8	40 1/8	40 1/2	72
Q39-RL-10	40 7/8	43 1/8	42 3/8	42 3/8	77

Three Section Transparent Gauges					
Model No.	Visible Glass Inch	Overall Length Inch	Minimum Centres Side Connections 1/2 inch 3/4 inch		Approx Weight Lb.
Q36-TL-10	30 3/8	32 7/8	31 7/8	32 1/4	88
Q37-TL-10	33 3/4	36 1/4	35 1/4	35 5/8	96
Q38-TL-10	38 5/8	41 1/8	40 1/8	40 1/2	110
Q39-TL-10	40 7/8	43 1/8	42 3/8	42 3/4	116

Four Section Reflex Gauges					
Model No.	Visible Glass Inch	Overall Length Inch	Minimum Centres Side Connections 1/2 inch 3/4 inch		Approx Weight Lb.
Q47-RL-10	45 1/2	48	47	47 3/8	85
Q48-RL-10	52	54 1/2	53 1/2	53 7/8	96
Q49-RL-10	55	57 1/2	56 1/2	56 1/2	102

Four Section Transparent Gauges					
Model No.	Visible Glass Inch	Overall Length Inch	Minimum Centres Side Connections 1/2 inch 3/4 inch		Approx Weight Lb.
Q47-TL-10	45 1/2	48	47	47 3/8	128
Q48-TL-10	52	54 1/2	53 1/2	53 7/8	146
Q49-TL-10	55	57 1/2	56 1/2	56 1/2	155

Five Section Reflex Gauges					
Model No.	Visible Glass Inch	Overall Length Inch	Minimum Centres Side Connections 1/2 inch 3/4 inch		Approx Weight Lb.
Q57-RL-10	57 1/2	59 3/4	58 3/4	59 1/8	88
Q58-RL-10	65 3/8	67 7/8	66 7/8	67 1/4	100
Q59-RL-10	69 1/8	71 5/8	70 5/8	71	106

Five Section Transparent Gauges					
Model No.	Visible Glass Inch	Overall Length Inch	Minimum Centres Side Connections 1/2 inch 3/4 inch		Approx Weight Lb.
Q57-TL-10	57 1/2	59 3/4	58 3/4	59 1/8	134
Q58-TL-10	65 3/8	67 7/8	66 7/8	67 1/4	152
Q59-TL-10	69 1/8	71 5/8	70 5/8	71	161